



# Ontario Cup #2

## Team Captains' Meeting

January 13, 2017



# Introductions

- Chief of Competition – Shawn Sinclair
- TD – Rod Somppi
- Competition Secretary – Debra Friendly
- Assistant Chief of Comp. – Alan White
- Chief of Course – Richard Lay
- Chief of Grooming – Chance Dionne
- Chief of Stadium – Bruce Green
- Chief of Timing – Susie Saunderson / Richard Lemoine
- Chief of Starts – Bud Christensen
- Chief of Finish - Frances Norlen

# Welcome

- Confirmation lists are being circulated and need to be finalized 15 min after the end of the meeting.
- Draw will be done immediately after this meeting and will be posted on Zone4

# Jury

- TD – Rod Somppi (chair)
- Chief of Comp – Shawn Sinclair
- Coach – Katja Mathys

# Race Office

- Hours: 7:30 – 16:00hrs
- Bib pickup: 7:45 hrs
- Please return DNS bibs and clothing bags
- Missing bibs are subject to a \$100 fee
- Leaders bibs

# Weather Report

- Collingwood no longer has a weather station – it is in Barrie.
  - Wiarton [http://www.weatheroffice.gc.ca/city/pages/on-130\\_metric\\_e.html](http://www.weatheroffice.gc.ca/city/pages/on-130_metric_e.html)
  - Collingwood [http://www.weatheroffice.gc.ca/city/pages/on-150\\_metric\\_e.html](http://www.weatheroffice.gc.ca/city/pages/on-150_metric_e.html)
  - Radar [http://www.weatheroffice.gc.ca/radar/index\\_e.html?id=WKR](http://www.weatheroffice.gc.ca/radar/index_e.html?id=WKR)

Weather Network - Feversham

HOURLY

36 HOURS

WEEKEND

7 DAYS

14 DAYS

MONTHLY

THIS WEEKEND

NEXT WEEKEND

**Fri Evening**

Partly cloudy

**-12°C**

Feels like:

-18

POP:

20%

Wind:

NW 10 km/h

Gust:

22 km/h

Humidity:

85%

Dewpoint:

-14 °

**Fri Overnight**

Partly cloudy

**-15°C**

-21

20%

SE 10 km/h

17 km/h

72%

-18 °

**Sat Morning**

Mainly sunny

**-12°C**

-19

20%

S 15 km/h

23 km/h

72%

-16 °

**Sat Afternoon**

Mainly sunny

**-5°C**

-10

20%

W 15 km/h

24 km/h

68%

-11 °

**Sat Evening**

Partly cloudy

**-7°C**

-14

20%

W 20 km/h

39 km/h

73%

-11 °

# Grooming Report

- Will begin grooming after midnight
- Double track, best line

For Teams using the grooming bay for waxing:

Please move all equipment to the sides so that we can put the groomer inside.



# Pole Measuring Station

- ICR 343.8.1 In classical technique competitions the max pole height will not exceed 83% of the athletes height measured with ski boots on and an uncovered head.

Pole height is measured from the tip to the highest attachment point of the strap.

- We will be taking measurements in tomorrows race.
- If both poles are replaced during racing, they must be compliant.

# Coach Bibs

- 2 bibs per club for the O' Cup series, to be returned at O' Cup 4
- Lost or missing bibs will cost \$50.
- To be used on Classic race days for **grip testing only** on the race course
- Coaches are not allowed to follow athletes (pacing) nor use race course to get from point to point for coaching/splits
- Do not ski backwards on course
- Sanctions will be imposed against coaches and/or athletes if privileges are abused.
- See Katja Mathys for distribution

# Draw

- Seeded according to distance CPL
- SMDL first, fastest seed last
- 30 sec interval start

# Order of Start

- 10:00:30 Jr B, Juv B
- 10:34:00 PN Standing M
- 11:09:30 Open M
- 11:31:30 Open W, Jr G, Juv G
- 12:26:30 PN Standing W
- 13:02:30 Midget B
- 13:17:30 Midget G
- 13:28:30 PN SitSki M
- 13:31:00 PN SitSki W

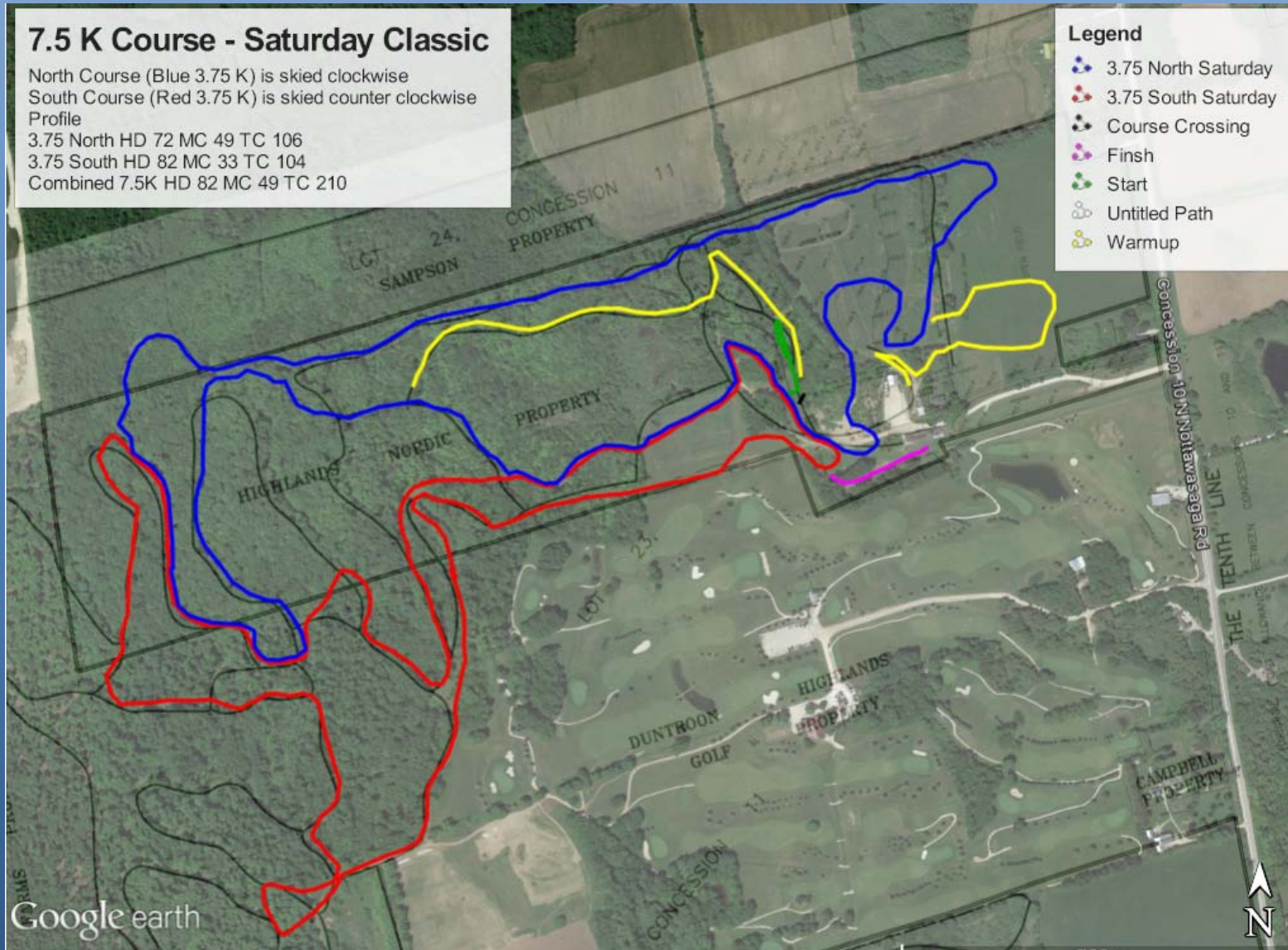
# Jr B, Juv B, PN Standing M

## 7.5 K Course - Saturday Classic

North Course (Blue 3.75 K) is skied clockwise  
South Course (Red 3.75 K) is skied counter clockwise  
Profile  
3.75 North HD 72 MC 49 TC 106  
3.75 South HD 82 MC 33 TC 104  
Combined 7.5K HD 82 MC 49 TC 210

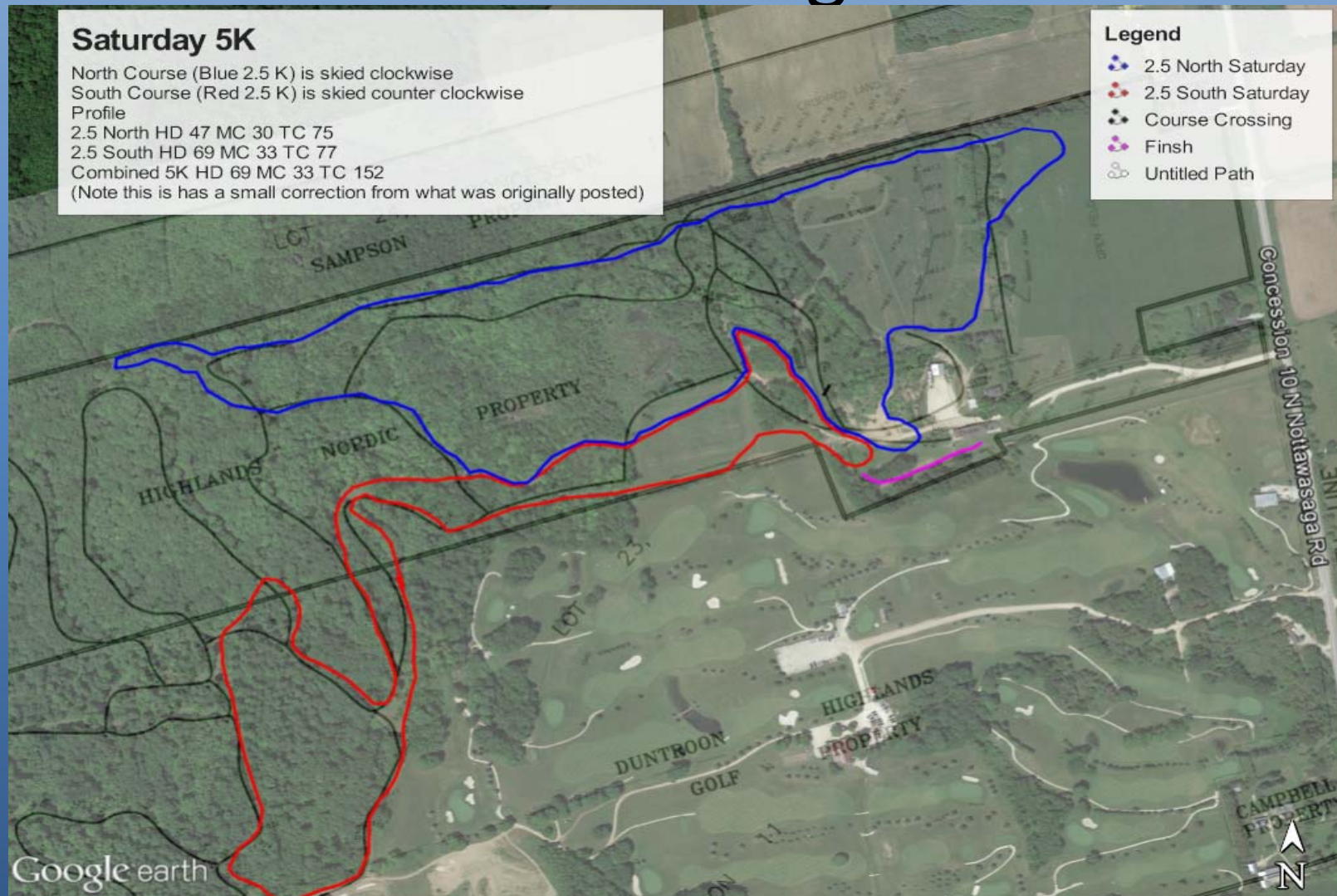
## Legend

- 3.75 North Saturday
- 3.75 South Saturday
- Course Crossing
- Finish
- Start
- Untitled Path
- Warmup





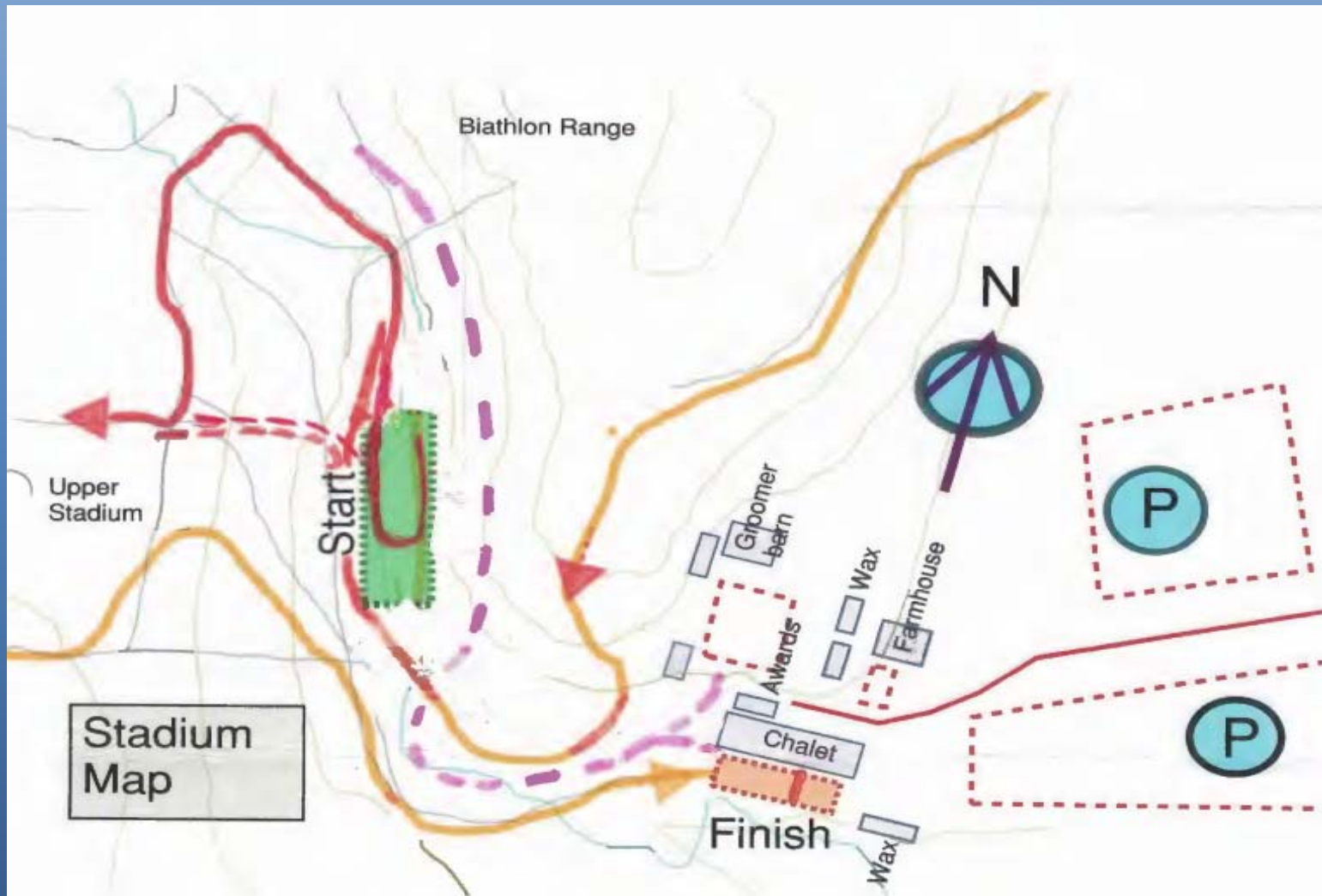
# Open Men, Open W, Jr G, Juv G, PN Standing W







# Stadium





# Warm up and Wax Test

- Warm up loop is two way traffic, please keep right and ski in a counterclockwise direction
- Wax testing loop, please ski in a counterclockwise direction

# Clothing

- Racers will be given a bag for their warm-ups at the start with their bib numbers on it.
- These bags will be transported to the finish area by the OC



# TD Comments

# Awards

Awards will take place on the north side of the chalet, facing the upper parking lot

Awards will be 20 min. after the finish of the categories as follows:

1. Juv B/ Jr B/ PN Standing M
2. Open M/Open W/Juv G/Jr G  
University W
3. PN Standing W/Midget B
4. Midget G/ PN SitSki M & W

# Other

- PN Guides are reminded that they are **not** to cross the finish line
- Start lists and Results will be posted in the Box Lunch Room, White board at the Granary, outside on the upper level deck.

## Other continued....

- Canadian Ski Patrol on site
- Inhalers, EPI pens and other medications are useless if they are in cars or the chalet. Coaches or parents should have them on their person in the stadium area
- Many people have nut allergies – please ask your athletes to minimize the exposure of others to any nut products they may bring onto the site

# Next Meeting

- Saturday January 14, 16:30